

*IMPORTANT GUIDELINES FOR INSTALLATION—STOP & READ BEFORE INSTALLING

DO NOT Install over a freshly painted surface
DO NOT Install over a dirty or damaged surface

DO NOT Install on a textured surface
DO NOT Peel entire backing off at once

Install According To Instructions Only:

Wine Cellar Specialists shall provide a complete copy of our current installation instructions to the customer. All installations must conform to the Wine Cellar Specialists current installation instructions in order for the Wine Cellar Specialists Guarantee to apply. **If the wall covering is installed in a manner other than that recommended by Wine Cellar Specialists, it is done at the sole risk of the installer and the Wine Cellar Specialists Guarantee protections do not apply.**

Check Shipment for Accuracy:

All labels shall be checked for accuracy by the installer to ensure that the shipment is received as ordered. If any discrepancy is found, Wine Cellar Specialists should be contacted immediately.

Check Product for Defects:

Upon receiving your mural, promptly check for product defects. If no defect is evident before installation, proceed with the installation. After each panel is installed, the material should be inspected. If any defect is evident at this time (or at any point of the installation) no further material should be applied and Wine Cellar Specialists should be contacted immediately. Install your mural within 24 hours of removing and unrolling from packaging (or roll up and place back in original packaging until ready to install). Failure to do so may cause the wall covering to curl. If there are any questions on the following instructions, contact Wine Cellar Specialists before proceeding.

Wall Preparation

Clean Surfaces: Prior to installation, clean the wall surface with a warm damp cloth to remove any dust and then let the wall dry completely. All hanging surfaces must be clean, smooth, dry, undamaged, free of mold, mildew, grease and stains. Loose paint or other wall coverings must be removed to ensure good adhesion. In order to ensure maximum smoothness of installation, nail heads, nicks, gouges, and other surface imperfections should be filled, sanded smooth and sealed.

******LOW OR NO VOC PAINT CLEANING** 1.) Use a lint free towel. 2. Mix 70% isopropyl alcohol with 30% water (you must use water, you will cause issues when using direct alcohol, such as bubbling). Make sure to wipe the wall thoroughly. You may see a bit of paint on the towel. Wait until it dries completely and repeat. 3.) Wait 15 minutes and then complete your installation.

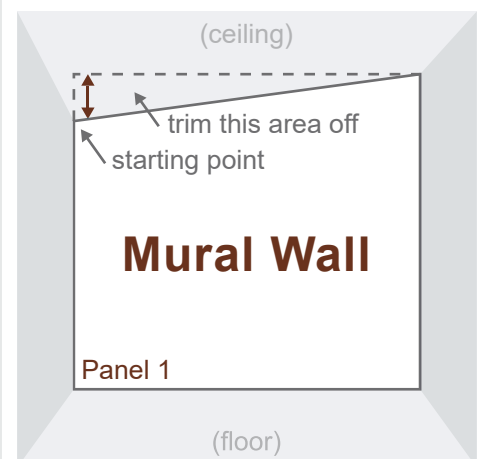
Moisture: Our murals are intended for use in buildings that are properly designed and maintained to avoid moisture infiltration, condensation and/or accumulation at wall cavities and wall surfaces, particularly in warm, humid climates. If you are unsure if moisture problems are present, consult a qualified professional before proceeding.

Wall Paint: Proper surface preparation is key to getting great results. Smartstick will adhere to primed and painted drywall. (If the Paint is LOW/NO VOC, use the proper cleaning method prior to your mural installation). It is very important that you allow a newly painted wall 30 days to completely out-gas. Otherwise, you will get veins, bubbles and tunnels from the paint out-gassing.

Wall Surface: A smooth wall surface is ideal when installing Peel & Stick wallcovering. It is NOT recommended to apply Peel & Stick onto brick, rough, or other textured wall surfaces.

Out-of-Plumb Walls:

Measure the difference in height between your starting point and the highest point on your wall. Compensate for the difference by leaving that amount of extra material at the top of the first panel (which you will trim off at the end). If the width of your walls is out of plumb, compensate similarly.



Measure Carefully: For a successful hanging job, it is essential that your wall covering be hung straight. Mark straight horizontal and vertical lines on your wall to line up the first panel. If the mural is smaller than the total wall space, mark out the dimensions lightly in pencil on the wall using a level and tape measure to create a straight center line and make sure that the area is level. Use only a lead pencil for marking walls. Do not use ballpoint or marking pen; they will bleed through the surface.

Temperature: Do not install wall covering unless a temperature above 65° degrees F is maintained in both areas of installation and storage for at least 48 hours prior to installation.

Preview Panels: Arrange the panels of the mural in front of the wall where they will be installed in the proper order. All murals more than (1) panel will be numbered, in order, on the bottom left corner. This marking is small and faint so that if not trimmed after installing, it will not be readily apparent.

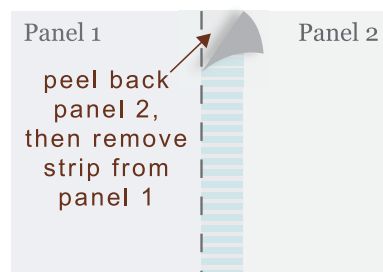
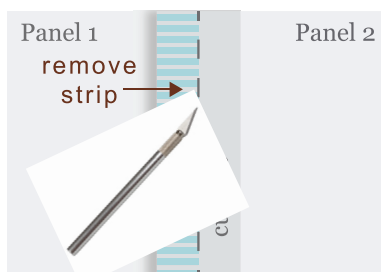
Hanging Guidelines

It's time to start hanging your wall covering.

1. Install "Panel #1" by carrying your panel to your wall. Peel back the liner paper a few inches, smoothing the upper portion against the wall, ensuring that it is straight with your plumb line. DO NOT peel off the entire liner paper all at once.
2. Give the top portion of the panel a couple of strokes at the ceiling line to force it flat against the wall.
3. Leave up to one inch overage for trimming along the ceiling line.
4. Line up the edge of your wall covering to your vertical plumb line.
5. Slowly and evenly peel back the liner a few inches at a time and apply. Consider having another person hold the bottom of the panel as you work your way down and apply the rest of the panel.
6. Using the smoothing tool included in your Peel & Stick order, carefully smooth all wrinkles and bubbles outward, until they are removed. Do not use pressure. Simple light strokes work best. Be careful not to stretch the mural while positioning. If wrinkles or bubbles appear, simply peel back the panel and reapply that section.
7. When the panel is positioned correctly, sweep your smoothing tool across the panel from the center outwards, working out all air bubbles. Trim at the ceiling and baseboard with a sharp razor blade and broad knife.

PLEASE NOTE: Every mural is printed with a two inch overlap. Do not butt panels.

8. Overlap the second panel over the first panel by approximately 2 inches, matching up the image. Apply any additional panels in the same method, overlapping each panel approximately 2 inches and matching up the image. Carefully smooth out all bubbles as you go.
9. Murals are printed with a 2 inch overlap intended to be double cut. Place your straight edge vertically in the center of the overlap and cut through both layers of material using a sharp razor blade. Make long cuts, without lifting the blade. (Use of an exacto knife with a fresh blade is recommended). Peel away both pieces of excess material after completing the cut.



10. If the mural is larger than the wall space, cut along the corners or edges of the wall using a sharp razor blade and straight edge as a guide. Make long cuts, without lifting the blade. Step back and enjoy!

For Further Instruction, call Wine Cellar Specialists for support at (972) 454-0480